

NEWSLETTER

Capstone
Copper and
Orion
Announce
Closing of
C\$431 Million
Bought Deal

AUST: Top Winner
ATLX: Top Loser



Palladium went down
this week by 9.18%



Weekly Market Overview

Commodity	Weekly Chg.	Weekly Chg. %	Vol.
Gold	⬇️	-0.82%	0.43%
Silver	⬇️	-0.35%	0.96%
Copper	⬇️	-2.07%	0.91%
Platinum	⬇️	-2.18%	1.75%
Aluminium	⬇️	-1.07%	0.68%
Palladium	⬇️	-9.18%	2.31%
Nickel	⬇️	-2.43%	0.77%
Lead	⬇️	-4.47%	0.98%
Tin	⬆️	2.02%	0.78%
Zinc	⬇️	-4.87%	0.91%

Gold Junior Miners

Negative

- Gold Indices: **Negative**
- Commodity Sentiment: **Neutral**
- Junior Miners Sentiment: **Negative**

Silver Junior Miners

Negative

- Silver Indices: **Negative**
- Commodity Sentiment: **Neutral**
- Junior Miners Sentiment: **Negative**

Copper Junior Miners

Neutral

- Copper Indices: **Neutral**
- Commodity Sentiment: **Neutral**
- Junior Miners Sentiment: **Negative**

Commodity Sentiment

Neutral

- Commodities Indices: **Neutral**
- Inflation: **Neutral**
- Consumer Sentiment: **Ext. Positive**

Junior Miners Sentiment

Negative

- Gold Indices: **Negative**
- Silver Indices: **Negative**
- Copper Indices: **Neutral**
- Commodity Sentiment: **Negative**

Our barometer is a way to gauge market movements and whether security instruments are fairly priced. The theory is based on the logic that excessive negativity tends to drive down the prices, and too much positivity tends to have the opposite effect.

Our barometer is a compilation of different indicators that measure some aspect of ETF and commodities behavior. They are comprised of market momentum, price strength, and stock price breadth. It tracks how much these individual indicators deviate from their average. The weightage of each factor is subject to past behavior and market conditions.

Top 5 ⬆️		Top 5 ⬇️	
Ticker	1 W Chg. %	Ticker	1 W Chg. %
AUST	16.67%	ATLX	-14.48%
NXPL	12.16%	UUUU	-11.95%
RETO	11.93%	USGO	-10.76%
TRX	8.89%	CCJ	-10.10%
AUMN	8.84%	LEU	-9.06%

Top 5 Weekly Private Placement News

- C Capstone Copper and Orion Announce Closing of C\$431M Bought Deal: [Link](#)
- Erdene Resource Secures Debt Financing for Bayan Khundii Gold Project From Strategic Partner: [Link](#)
- Fission Uranium Announces \$75 Million Bought Deal Financing: [Link](#)
- Aya Gold and Silver Announces \$67.5M Bought Deal Offering of Common Shares: [Link](#)
- Imperial Metals Plans to Issue up to \$45 Million of Non-Convertible Debentures: [Link](#)

31 Deals
>\$691M

[Find all the Private Placements and News HERE](#)

Top Junior Mining News

- Moneta Gold and Nighthawk Gold Complete At-Market Merger to Form STLLR Gold Inc.: [Link](#)
- Erdene Secures Debt Financing for Bayan Khundii Gold Project From Strategic Partner: [Link](#)
- Alliance Nickel Signs Non-Binding Term Sheet with Samsung SDI: [Link](#)
- Silver Lake, Red 5 to merge: [Link](#)
- Osino Files Management Information Circular for Special Meeting of Securityholders: [Link](#)

Opinions and Insights

- Gold Weekly Price Forecast: [Link](#)
- Silver Weekly Price Forecast: [Link](#)
- Commodity Weekly: [Link](#)

High Impact Calendar (GMT +1:00)

GMT +00:00		High Impact Expected News		
Date	Time	Announcement	Previous	Forecast
13/2/2024	3:30pm	US Core CPI m/m	0.30%	0.30%
13/2/2024	3:30pm	US CPI m/m	0.30%	0.20%
13/2/2024	3:30pm	US CPI y/y	3.40%	2.90%
15/2/2024	3:30pm	US Core Retail Sales m/m	0.40%	0.10%
15/2/2024	3:30pm	US Philly Fed Manufacturing Index	-10.6	-8.9
15/2/2024	3:30pm	US Retail Sales m/m	-0.20%	0.60%
15/2/2024	3:30pm	US Unemployment Claims	218K	217K
16/2/2024	3:30pm	US Core PPI m/m	0.00%	0.10%
16/2/2024	3:30pm	US PPI m/m	-0.10%	0.10%
16/2/2024	5:00pm	US Prelim UoM Consumer Sentiment	79	79.9

Erebor Technicals

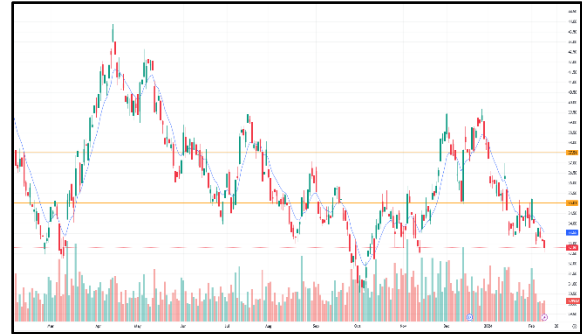
SPGSCI



Comments:

The S&P GSCI closed the week at 589.40, up 0.52% from the previous week. The index traded within a relatively narrow range throughout the week, but managed to close slightly higher. The RSI (Relative Strength Index) for the S&P GSCI ended the week at 60.70, indicating neutral territory but nearing overbought levels. Overall, the technical analysis for the S&P GSCI suggests a slightly bullish sentiment in the short term, although the RSI suggests a potential for a pullback.

GDXJ



Comments:

GDXJ closed the week at \$40.75, up 1.23% from the previous week. Similar to other commodity-related indices, GDXJ traded within a tight range but managed to finish slightly higher. The index remained above its 20-day and 50-day moving averages, indicating short-term bullishness. However, the RSI (Relative Strength Index) closed at 63.50, which is considered overbought territory. Overall, the technical analysis of GDXJ presents a mixed picture. While the short-term trend appears slightly bullish, the overbought RSI could signal a potential pullback in the near future.

SILJ:

COPX:



Comments:

SILJ closed the week at \$25.75, up 1.98% from the previous week. Similar to GDXJ and S&P GSCI, it traded within a narrow range but closed above its 20-day and 50-day moving averages, indicating short-term bullishness. The RSI (Relative Strength Index) for SILJ is currently at 66.20, which is considered to be in overbought territory. Overall, the technical analysis of SILJ for the week is slightly bullish, with the index consolidating near its 50-day moving average.

Comments:

COPX closed the week at \$39.50, up 1.27% from the previous week. Similar to other commodity-related indices, it traded within a tight range throughout the week but managed to close slightly higher. The index remained above its 20-day and 50-day moving averages, indicating short-term bullishness. However, the RSI (Relative Strength Index) reached 68.10, which suggests it's approaching overbought territory. Overall, the technical analysis of COPX presents a mixed picture. While the short-term trend appears slightly bullish, the overbought RSI and the proximity to resistance at the 200-day moving average could signal a potential pullback in the near future.

Disclaimer

The information in this report is provided by www.ereborinsights.com solely for informational purposes and should not be regarded as a recommendation to buy, sell or otherwise deal in any particular investment. The opinions expressed in this report are the opinions of the author and the information provided is drawn from sources believed to be reliable, but the accuracy or completeness of the information is not guaranteed, nor in providing it does Erebor Insights or persons assume any responsibility or liability whatsoever. The commentary is not to be construed as an offer to sell or a solicitation of an offer to buy any securities. Erebor Insights accepts no liability whatsoever for any loss arising from any use or reliance on this commentary or any of the information contained herein.

Also note that as markets change continuously, previously published information and data may not be current and should not be relied upon, and there may be delays, omissions, or inaccuracies in such information. Erebor Insights believes that all information contained in this report was correct at the time of going to press. However, they cannot accept liability for any errors

This information is distributed electronically through email. Should you wish to no longer receive electronic communications from us, please contact info@ereborinsights.com and indicate in the subject line your full name and/or corporate entity name and that you wish to unsubscribe from receiving this electronic communication.