

5 May 2024

www.ereborinsights.com

NEWSLETTER

NexGen
Announces
Upsized
C\$224
Million CDI
Offering in
Australia

ZHUD: Top Winner
BRYGF: Top Loser



Platinum went up this
week by 4.75%



Weekly Market Overview

Commodity	Weekly Chg.	Weekly Chg. %	Vol.
Gold	👇	-1.33%	1.45%
Silver	👇	-2.17%	1.91%
Copper	👇	-1.17%	1.39%
Platinum	👆	4.75%	1.05%
Aluminium	👇	-1.31%	0.63%
Palladium	👇	-0.78%	1.64%
Nickel	👇	-2.20%	1.65%
Lead	👇	-1.84%	0.85%
Tin	👇	-3.28%	2.70%
Zinc	👆	1.55%	2.11%

Gold Junior Miners

Positive



- Gold Indices: **Positive**
- Commodity Sentiment: **Neutral**
- Junior Miners Sentiment: **Positive**

Silver Junior Miners

Positive



- Silver Indices: **Positive**
- Commodity Sentiment: **Neutral**
- Junior Miners Sentiment: **Positive**

Copper Junior Miners

Positive



- Copper Indices: **Positive**
- Commodity Sentiment: **Neutral**
- Junior Miners Sentiment: **Positive**

Commodity Sentiment

Neutral



- Commodities Indices: **Neutral**
- Inflation: **Neutral**
- Consumer Sentiment: **Ext. Positive**

Junior Miners Sentiment

Positive



- Gold Indices: **Positive**
- Silver Indices: **Positive**
- Copper Indices: **Positive**
- Commodity Sentiment: **Positive**

Our barometer is a way to gauge market movements and whether security instruments are fairly priced. The theory is based on the logic that excessive negativity tends to drive down the prices, and too much positivity tends to have the opposite effect.

Our barometer is a compilation of different indicators that measure some aspect of ETF and commodities behavior. They are comprised of market momentum, price strength, and stock price breadth. It tracks how much these individual indicators deviate from their average. The weightage of each factor is subject to past behavior and market conditions.

Top 5 ↗		Top 5 ↘	
Ticker	1 W Chg. %	Ticker	1 W Chg. %
ZHUD	54.76%	BRYGF	-80.09%
RDEXF	49.12%	KATX	-50.00%
EVGDF	44.60%	KAIFF	-31.00%
STAL	40.93%	HAMRF	-23.73%
IBRLF	37.93%	MDMN	-23.08%

Top 5 Weekly Private Placement News

- NexGen Announces Upsized C\$224 Million CDI Offering in Australia: [Link](#)
- i-80 Gold Closes C\$115 Million Bought Deal Public Offering: [Link](#)
- WESTERN COPPER AND GOLD ANNOUNCES COMPLETION OF BOUGHT DEAL PUBLIC OFFERING OF \$46 MILLION: [Link](#)
- NMG Announces the Closing of Aggregate US\$37.5-Million Private Placement by Mitsui and Pallinghurst: [Link](#)
- Hot Chili Arranges A\$29.9M Funding to Accelerate Costa Fuego Copper Hub, Chile: [Link](#)

66 Deals
>\$512M

[Find all the Private Placements and News HERE](#)

Top Junior Mining News

- Contango ORE Announces Acquisition of HighGold Mining: [Link](#)
- Treasury Metals and Blackwolf to Create New Growth-Focused North American Gold Platform: [Link](#)
- Nexus Announces Increased Ownership in Independence Gold Project: [Link](#)
- Bendito Resources Announces the Closing of the Mt. Hamilton Project Acquisition: [Link](#)
- Pan American Silver Announces the Sale of La Arena for US\$245 Million Cash Upfront and US\$50 Million Contingent Payment: [Link](#)

Opinions and Insights

- Gold Weekly Price Forecast: [Link](#)
- Silver Weekly Price Forecast: [Link](#)
- Commodity weekly: [Link](#)

High Impact Calendar (GMT +1:00)

GMT +00:00		High Impact Expected News		
30/4/2024	4:30am	CH Manufacturing PMI	50.8	50.3
30/4/2024	5:00pm	US Employment Cost Index q/q	0.90%	1.00%
30/4/2024	3:30pm	US CB Consumer Confidence	104.7	104

Erebor Technicals

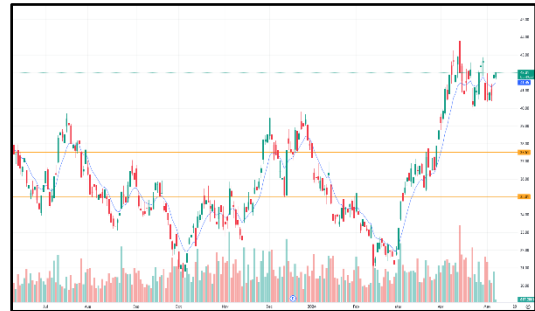
SPGSCI



Comments:

For the week of April 29 - May 3, 2024, the SPGSCI displayed mixed signals in its technical analysis, suggesting a generally neutral market stance. Indicators such as the Relative Strength Index (RSI) and the Moving Average Convergence Divergence (MACD) provided buy signals, while others like the Stochastic RSI indicated an oversold condition, which might suggest potential for a rebound or upward movement. This is corroborated by positive movements in other indicators like the Average Directional Index (ADX) and Rate of Change (ROC), which support buying action.

GDXJ



Comments:

For the week of April 29 - May 3, 2024, the technical analysis for the GDXJ presents a generally neutral outlook. The analysis shows a balance of buy and sell signals across various technical indicators, suggesting a period of market equilibrium without a clear direction. Key indicators such as the Relative Strength Index (RSI) and Moving Average Convergence Divergence (MACD) do not present strong buy or sell signals, indicating that the ETF might not experience significant price movements during this period.

SILJ:



COPX:



Comments:

For the week of April 29 - May 3, 2024, the technical analysis for SILJ presents a neutral outlook, with mixed signals across major indicators like the Relative Strength Index (RSI) and Moving Average Convergence Divergence (MACD) suggesting a lack of strong directional momentum. This indicates a period of market indecision for SILJ, where investors might observe without significant trading actions unless further market movements or news provide clearer signals.

Comments:

For the week of April 29 - May 3, 2024, the technical analysis for the Global X Copper Miners ETF (COPX) suggests a neutral to slightly negative outlook. The analysis points to a continuation of the recent sell-off, potentially extending over the next few weeks. Key indicators from this period suggest investors might expect some range contraction and possibly a further decline before stabilizing. This reflects broader market uncertainty, particularly in the commodities and metals sectors, influenced by various economic indicators and market sentiments.

Disclaimer

The information in this report is provided by www.ereborinsights.com solely for informational purposes and should not be regarded as a recommendation to buy, sell or otherwise deal in any particular investment. The opinions expressed in this report are the opinions of the author and the information provided is drawn from sources believed to be reliable, but the accuracy or completeness of the information is not guaranteed, nor in providing it does Erebor Insights or persons assume any responsibility or liability whatsoever. The commentary is not to be construed as an offer to sell or a solicitation of an offer to buy any securities. Erebor Insights accepts no liability whatsoever for any loss arising from any use or reliance on this commentary or any of the information contained herein.

Also note that as markets change continuously, previously published information and data may not be current and should not be relied upon, and there may be delays, omissions, or inaccuracies in such information. Erebor Insights believes that all information contained in this report was correct at the time of going to press. However, they cannot accept liability for any errors.

This information is distributed electronically through email. Should you wish to no longer receive electronic communications from us, please contact info@ereborinsights.com and indicate in the subject line your full name and/or corporate entity name and that you wish to unsubscribe from receiving this electronic communication.