

30th Oct 2023

www.ereborinsights.com

# NEWSLETTER

Generation  
Mining  
Announces  
C\$15  
Million  
Bought Deal  
Financing

ATI: Top Winner  
AUMN: Top Loser



Palladium went up  
this week by 2.04%



### Weekly Market Overview

Commodity	Weekly Chg.	Weekly Chg. %	Vol.
Gold	↗	1.25%	0.49%
Silver	↘	-0.43%	0.79%
Copper	↗	1.06%	0.30%
Platinum	↗	0.94%	1.43%
Aluminium	↗	1.76%	0.89%
Palladium	↗	2.04%	0.99%
Nickel	↘	-1.96%	0.74%
Lead	↘	-1.07%	0.83%
Tin	↗	1.88%	0.78%
Zinc	↗	1.25%	1.45%

**Gold Junior Miners**  
**Neutral**

- Gold Indices: **Neutral**
- Commodity Sentiment: **Neutral**
- Junior Miners Sentiment: **Neutral**

**Silver Junior Miners**  
**Neutral**

- Silver Indices **Neutral**
- Commodity Sentiment: **Neutral**
- Junior Miners Sentiment: **Neutral**

**Copper Junior Miners**  
**Negative**

- Copper Indices: **Negative**
- Commodity Sentiment: **Neutral**
- Junior Miners Sentiment: **Neutral**

**Commodity Sentiment**  
**Neutral**

- Commodities Indices: **Neutral**
- Inflation: **Neutral**
- Consumer Sentiment: **Ext. Positive**

**Junior Miners Sentiment**  
**Neutral**

- Gold Indices: **Neutral**
- Silver Indices: **Neutral**
- Copper Indices: **Negative**
- Commodity Sentiment **Neutral**

Our barometer is a way to gauge market movements and whether security instruments are fairly priced. The theory is based on the logic that excessive negativity tends to drive down the prices, and too much positivity tends to have the opposite effect. Our barometer is a compilation of different indicators that measure some aspect of ETF and commodities behavior. They are comprised of market momentum, price strength, and stock price breadth. It tracks how much these individual indicators deviate from their average. The weightage of each factor is subject to past behavior and market conditions.

<b>Top 5 ↗</b>		<b>Top 5 ↘</b>	
Ticker	1 W Chg. %	Ticker	1 W Chg. %
ATI	5.65%	AUMN	-42.11%
USAU	5.21%	ABAT	-30.61%
DC	4.43%	RETO	-19.63%
UEC	3.38%	USGO	-18.33%
HAYN	3.23%	HYMC	-17.83%

### Top 5 Weekly Private Placement News

- Generation Mining Announces C\$15 Million Bought Deal Financing: [Link](#)
- Metalla Royalty & Streaming Completes C\$15 Million Equity Placement: [Link](#)
- EMP Metals Reports Fully Subscribed Financing of Nearly \$9.8M: [Link](#)
- Rock Tech Lithium Announces Proposed C\$10 Million Non-Brokered PP: [Link](#)
- Wallbridge Mining Closes PP of Flow-Through Shares for C\$9.4M: [Link](#)

[Find all the Private Placements and News HERE](#)

**22 Deals**  
**>\$86M**

### Top Junior Mining News

- Atacama Copper to Combine with TCP1 to Create a Diversified Exploration and Development Company in Latin America: [Link](#)
- Lincoln Provides Update on Proposed Acquisition of The Bell Mountain Project from EROS Resources Corp.: [Link](#)
- PolyMet Shareholders to Vote on Arrangement with Glencore: [Link](#)
- ArcelorMittal S.A.: Statement regarding tragic accident in Kazakhstan : [Link](#)

### Opinions and Insights

- Gold Weekly Price Forecast: [Link](#)
- Silver Weekly Price Forecast: [Link](#)
- Commodity Weekly: [Link](#)

### High Impact Calendar (GMT +1:00)

GMT +00:00		High Impact Expected News		
Date	Time	Announcement	Previous	Forecast
10/31/2023	3:30am	CH Manufacturing PMI	50.2	50.2
10/31/2023	Tentative	JN BOJ Outlook Report		
10/31/2023	Tentative	JN Monetary Policy Statement		
10/31/2023	2:30pm	US Employment Cost Index q/q	1.00%	1.00%
10/31/2023	4:00pm	US CB Consumer Confidence	103	100.1
11/1/2023	2:15pm	US ADP Non-Farm Employment Change	89K	141K
11/1/2023	4:00pm	US ISM Manufacturing PMI	49	49
11/1/2023	4:00pm	US JOLTS Job Openings	9.61M	9.27M
11/1/2023	8:00pm	US Federal Funds Rate	5.50%	5.50%
11/1/2023	8:00pm	US FOMC Statement		
11/1/2023	8:30pm	US FOMC Press Conference		
11/2/2023	2:30pm	US Unemployment Claims	210K	210K
11/3/2023	2:30pm	US Average Hourly Earnings m/m	0.20%	0.30%
11/3/2023	2:30pm	US Non-Farm Employment Change	336K	182K
11/3/2023	2:30pm	US Unemployment Rate	3.80%	3.80%
11/3/2023	4:00pm	US ISM Services PMI	53.6	53.2

### Erebor Technicals

#### SPGSCI



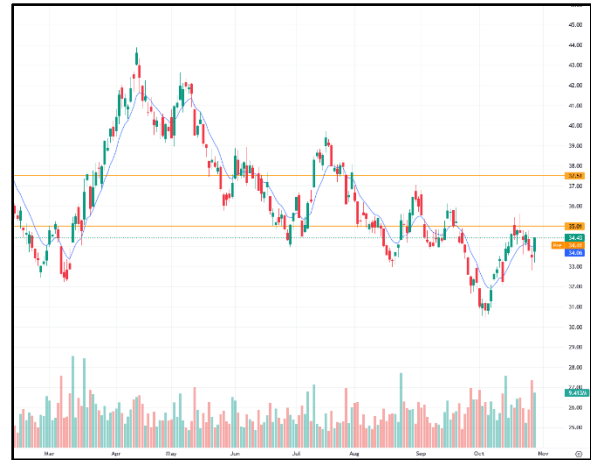
#### Comments:

The S&P GSCI closed the week at 594.33, up 0.71% from the previous week.

The index traded within a relatively narrow range throughout the week, but closed above its 20-day and 50-day moving averages, which is a bullish signal.

The RSI (Relative Strength Index) for the S&P GSCI is currently at 55.40, which is considered to be neutral territory.

#### GDXJ



#### Comments:

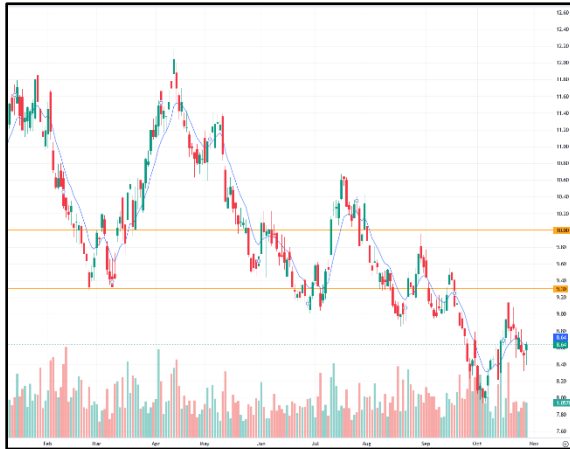
The GDXJ closed the week at 38.45, up 1.2% from the previous week.

The index traded within a relatively narrow range throughout the week, but closed above its 20-day and 50-day moving averages, which is a bullish signal.

The RSI (Relative Strength Index) for the GDXJ is currently at 53.40, which is considered to be neutral territory.



### SILJ:



#### **Comments:**

The SILJ closed the week at 22.45, up 0.8% from the previous week.

The index traded within a relatively narrow range throughout the week, but closed above its 20-day and 50-day moving averages, which is a bullish signal.

The RSI (Relative Strength Index) for the SILJ is currently at 54.40, which is considered to be neutral territory.

### COPX:



#### **Comments:**

COPX closed the week at 41.06, up 0.4% from the previous week.

The index traded within a relatively narrow range throughout the week, but closed above its 20-day and 50-day moving averages, which is a bullish signal.

The RSI (Relative Strength Index) for COPX is currently at 55.40, which is considered to be neutral territory.

### Disclaimer

The information in this report is provided by [www.ereborinsights.com](http://www.ereborinsights.com) solely for informational purposes and should not be regarded as a recommendation to buy, sell or otherwise deal in any particular investment. The opinions expressed in this report are the opinions of the author and the information provided is drawn from sources believed to be reliable, but the accuracy or completeness of the information is not guaranteed, nor in providing it does Erebor Insights or persons assume any responsibility or liability whatsoever. The commentary is not to be construed as an offer to sell or a solicitation of an offer to buy any securities. Erebor Insights accepts no liability whatsoever for any loss arising from any use or reliance on this commentary or any of the information contained herein.

Also note that as markets change continuously, previously published information and data may not be current and should not be relied upon, and there may be delays, omissions, or inaccuracies in such information. Erebor Insights believes that all information contained in this report was correct at the time of going to press. However, they cannot accept liability for any errors

This information is distributed electronically through email. Should you wish to no longer receive electronic communications from us, please contact [info@ereborinsights.com](mailto:info@ereborinsights.com) and indicate in the subject line your full name and/or corporate entity name and that you wish to unsubscribe from receiving this electronic communication.