

28th Aug 2023

www.ereborinsights.com

# NEWSLETTER

Consolidated  
Uranium  
Announces  
Closing of Private  
Placement by  
Premier  
American  
Uranium Inc.  
(\$6M)

UEC: Top Winner  
RETO: Top Loser



Silver went up this  
week by 6.41%



### Weekly Market Overview

Commodity	Weekly Chg.	Weekly Chg. %	Vol.
Gold	↗	1.28%	0.48%
Silver	↗	6.41%	2.09%
Copper	↗	2.04%	0.90%
Platinum	↗	3.72%	0.30%
Aluminium	↗	0.83%	1.07%
Palladium	↘	-2.66%	2.19%
Nickel	↗	4.96%	1.22%
Lead	↗	1.11%	0.88%
Tin	↗	0.95%	2.49%
Zinc	↗	5.11%	1.39%

#### Gold Junior Miners

**Neutral**

- Gold Indices: **Neutral**
- Commodity Sentiment: **Neutral**
- Junior Miners Sentiment: **Neutral**

#### Silver Junior Miners

**Neutral**

- Silver Indices: **Neutral**
- Commodity Sentiment: **Neutral**
- Junior Miners Sentiment: **Neutral**

#### Copper Junior Miners

**Neutral**

- Copper Indices: **Neutral**
- Commodity Sentiment: **Neutral**
- Junior Miners Sentiment: **Neutral**

#### Commodity Sentiment

**Neutral**

- Commodities Indices: **Neutral**
- Inflation: **Neutral**
- Consumer Sentiment: **Ext. Positive**

#### Junior Miners Sentiment

**Neutral**

- Gold Indices: **Neutral**
- Silver Indices: **Neutral**
- Copper Indices: **Neutral**
- Commodity Sentiment: **Neutral**

Our barometer is a way to gauge market movements and whether security instruments are fairly priced. The theory is based on the logic that excessive negativity tends to drive down the prices, and too much positivity tends to have the opposite effect.

Our barometer is a compilation of different indicators that measure some aspect of ETF and commodities behavior. They are comprised of market momentum, price strength, and stock price breadth. It tracks how much these individual indicators deviate from their average. The weightage of each factor is subject to past behavior and market conditions.

Top 5 ↗		Top 5 ↘	
Ticker	1 W Chg. %	Ticker	1 W Chg. %
UEC	75.29%	RETO	-82.13%
NEXA	15.73%	NXPL	-16.73%
MUX	9.09%	CENX	-10.12%
VGZ	6.86%	CSTE	-9.47%
EQX	6.53%	HYMC	-7.37%

### Top 5 Weekly Private Placement News

- Consolidated Uranium Announces Closing of Private Placement by Premier American Uranium : [Link](#)
- Foremost Lithium Announces Pricing of \$4.0M Public Offering: [Link](#)
- Sitka Gold Announces Fully Subscribed \$4M Private Placement: [Link](#)
- DLP Resources Announces C\$3 Million Private Placement of Units: [Link](#)
- Cascadia Minerals Announces Closing of Upsized Private Placement: [Link](#)

**12 Deals**  
**>\$25M**

[Find all the Private Placements and News HERE](#)

### Top Junior Mining News

- Thesis Gold and Benchmark Metals Merger Approved by Court: [Link](#)
- Newmont Receives Clearance from Australia's Competition Regulator to Acquire Newcrest Mining: [Link](#)
- Thesis Completes Merger With Benchmark: [Link](#)
- Mina Tucano files revised version of its judicial reorganization plan: [Link](#)
- First Quantum and Rio Tinto Announce Completion of the La Granja Agreement: [Link](#)

### Opinions and Insights

- Gold Weekly Price Forecast: [Link](#)
- Silver Weekly Price Forecast: [Link](#)
- Powell: We're Prepared to Raise Rates Further if Appropriate: [Link](#)
- Australian bank CEO says Australia unlikely to enter recession, housing market holding up: [Link](#)
- US private sector at near-stagnation amid renewed fall in demand: [Link](#)

### High Impact Calendar (GMT +1:00)

GMT +00:00		High Impact Expected News		
Date	Time	Announcement	Previous	Forecast
8/29/2023	4:00pm	US S&P/CS Composite-20 HPI y/y	-1.70%	-1.50%
8/29/2023	5:00pm	US CB Consumer Confidence	117	116.2
8/29/2023	5:00pm	US JOLTS Job Openings	9.58M	9.70M
8/30/2023	3:15pm	US ADP Non-Farm Employment Change	324K	201K
8/30/2023	3:30pm	US Prelim GDP q/q	2.40%	2.40%
8/31/2023	4:30pm	CH Manufacturing PMI	49.3	49.1
8/31/2023	3:30pm	US Core PCE Price Index m/m	0.20%	0.20%
8/31/2023	3:30pm	US Unemployment Claims	230K	236K
9/1/2023	3:30pm	US Average Hourly Earnings m/m	0.40%	0.30%
9/1/2023	3:30pm	US Non-Farm Employment Change	187K	169K
9/1/2023	3:30pm	US Unemployment Rate	3.50%	3.50%
9/1/2023	3:30pm	US Non-Farm Employment Change	187K	169K

### Erebor Technicals

#### SPGSCI

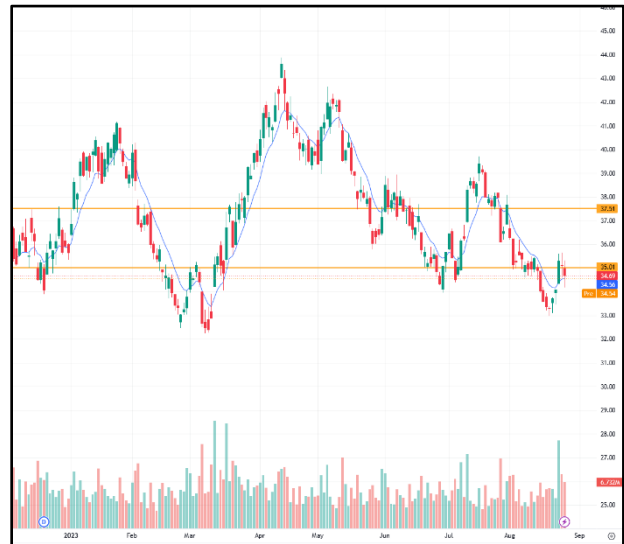


#### **Comments:**

The SPGSCI closed down 0.40% last week, trading in a range between 493.50 and 500.00.

The technical indicators are mixed, suggesting that the index is in a neutral to bearish trend.

#### GDXJ

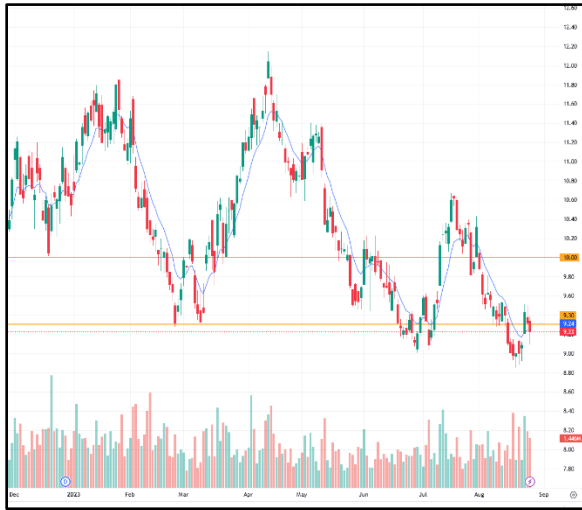


#### **Comments:**

GDXJ closed down 2.33% last week, trading in a range between \$38.45 and \$40.00.

The technical indicators are bearish, suggesting that the ETF is in a downtrend.

### SILJ:



### COPX:



#### Comments:

SILJ is in a downtrend, and may need to break above the 50-day moving average to reverse the trend.

The fund faces risks from silver price decline, stronger dollar, and recession.

#### Comments:

COPX is in a neutral to bearish trend, with the technical indicators mixed.

The ETF could break out of its range in the near future, but it is also facing risks from the price of copper, the US dollar, and the global economy.

### Disclaimer

The information in this report is provided by [www.ereborinsights.com](http://www.ereborinsights.com) solely for informational purposes and should not be regarded as a recommendation to buy, sell or otherwise deal in any particular investment. The opinions expressed in this report are the opinions of the author and the information provided is drawn from sources believed to be reliable, but the accuracy or completeness of the information is not guaranteed, nor in providing it does Erebor Insights or persons assume any responsibility or liability whatsoever. The commentary is not to be construed as an offer to sell or a solicitation of an offer to buy any securities. Erebor Insights accepts no liability whatsoever for any loss arising from any use or reliance on this commentary or any of the information contained herein.

Also note that as markets change continuously, previously published information and data may not be current and should not be relied upon, and there may be delays, omissions, or inaccuracies in such information. Erebor Insights believes that all information contained in this report was correct at the time of going to press. However, they cannot accept liability for any errors

This information is distributed electronically through email. Should you wish to no longer receive electronic communications from us, please contact [info@ereborinsights.com](mailto:info@ereborinsights.com) and indicate in the subject line your full name and/or corporate entity name and that you wish to unsubscribe from receiving this electronic communication.