

22nd January 2024

www.ereborinsights.com

NEWSLETTER

Amex
Exploration
Announces
C\$26
Million
Private
Placement

CTGO: Top Winner
ABAT: Top Loser



TIN went up this
week by 4.91%



Weekly Market Overview

Commodity	Weekly Chg.	Weekly Chg. %	Vol.
Gold	↘	-0.92%	1.04%
Silver	↘	-2.46%	1.10%
Copper	↘	-0.34%	0.89%
Platinum	↘	-0.88%	2.01%
Aluminium	↘	-2.41%	0.90%
Palladium	↘	-3.17%	2.81%
Nickel	↘	-0.86%	0.70%
Lead	↗	0.87%	1.98%
Tin	↗	4.91%	0.50%
Zinc	↘	-0.81%	1.12%

Gold Junior Miners

Neutral

- Gold Indices: **Negative**
- Commodity Sentiment: **Neutral**
- Junior Miners Sentiment: **Neutral**

Silver Junior Miners

Neutral

- Silver Indices: **Neutral**
- Commodity Sentiment: **Neutral**
- Junior Miners Sentiment: **Neutral**

Copper Junior Miners

Neutral

- Copper Indices: **Neutral**
- Commodity Sentiment: **Neutral**
- Junior Miners Sentiment: **Neutral**

Commodity Sentiment

Neutral

- Commodities Indices: **Neutral**
- Inflation: **Neutral**
- Consumer Sentiment: **Ext. Positive**

Junior Miners Sentiment

Neutral

- Gold Indices: **Negative**
- Silver Indices: **Neutral**
- Copper Indices: **Neutral**
- Commodity Sentiment: **Neutral**

Our barometer is a way to gauge market movements and whether security instruments are fairly priced. The theory is based on the logic that excessive negativity tends to drive down the prices, and too much positivity tends to have the opposite effect.

Our barometer is a compilation of different indicators that measure some aspect of ETF and commodities behavior. They are comprised of market momentum, price strength, and stock price breadth. It tracks how much these individual indicators deviate from their average. The weightage of each factor is subject to past behavior and market conditions.

Top 5 ↗		Top 5 ↘	
Ticker	1 W Chg. %	Ticker	1 W Chg. %
CTGO	5.44%	ABAT	-26.83%
MTAL	5.36%	LAAC	-16.15%
DC	3.77%	TMC	-13.19%
AUST	1.97%	HYMC	-12.97%
XPL	1.89%	GORO	-12.55%

Top 5 Weekly Private Placement News

- Amex Exploration Announces C\$26 Million Private Placement: [Link](#)
- G2 Goldfields Closes C\$22.05 Million Strategic Investment: [Link](#)
- IsoEnergy Announces Upsize in Bought Deal Private Placement to \$20M: [Link](#)
- FPX Nickel Announces \$14.4 Million Strategic Equity Investment: [Link](#)
- Canadian North Resources Receives Total Proceeds of \$9,186,597: [Link](#)

[Find all the Private Placements and News HERE](#)

25 Deals
>\$113M

Top Junior Mining News

- Perseus Mining announces intention to make takeover bid for OreCorp Ltd: [Link](#)
- Calibre Mining Shareholders Approve Marathon Gold Acquisition: [Link](#)
- Alamos Gold Announces Acquisition of Orford Mining Including Qiqavik Gold Project: [Link](#)
- Leo Lithium seals \$65m deal with Ganfeng for Goulamina Project: [Link](#)
- Luminex Resources Securityholders Overwhelmingly Approve Adventus Mining Merger: [Link](#)

Opinions and Insights

- Gold Weekly Price Forecast: [Link](#)
- Silver Weekly Price Forecast: [Link](#)
- Commodity Weekly: [Link](#)

High Impact Calendar (GMT +1:00)

GMT +00:00		High Impact Expected News		
Date	Time	Announcement	Previous	Forecast
23/1/2024	Tentative	JN Monetary Policy Statement		
23/1/2024	Tentative	JN BOJ Outlook Report		
24/1/2024	4:45pm	CA BOC Monetary Policy Report		
24/1/2024	4:45pm	CA BOC Rate Statement		
24/1/2024	4:45pm	CA Overnight Rate	5.00%	5.00%
24/1/2024	4:45pm	US Flash Manufacturing PMI	47.9	47.6
24/1/2024	4:45pm	US Flash Services PMI	51.4	51
25/1/2024	3:30pm	US Advance GDP q/q	4.90%	2.00%
25/1/2024	3:30pm	US Core Durable Goods Orders m/m	0.40%	0.20%
25/1/2024	3:30pm	US Durable Goods Orders m/m	5.40%	1.00%
25/1/2024	3:30pm	US Unemployment Claims	187K	199K
25/1/2024	3:45pm	EZ ECB Press Conference		
26/1/2024	3:30pm	US Core PCE Price Index m/m	0.10%	0.20%

Erebor Technicals

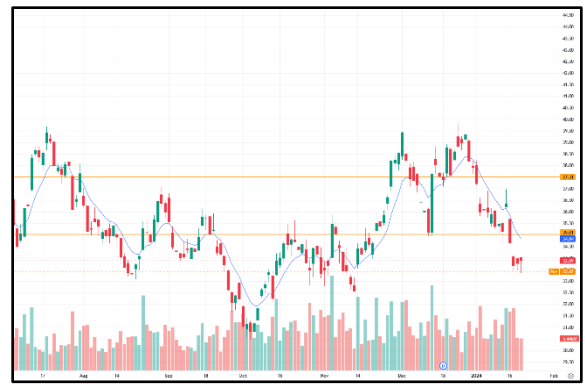
SPGSCI



Comments:

The S&P GSCI closed the week at 577.55, up 0.20% from the previous week. The index traded within a narrow range throughout the week, but closed above its 20-day and 50-day moving averages, which are bullish signals. The RSI (Relative Strength Index) for the S&P GSCI is currently at 57.70, which is considered to be in neutral territory. Overall, the technical analysis of the S&P GSCI for the week of January 15-21, 2024, is slightly bullish, and the index is currently consolidating near its 50-day moving average.

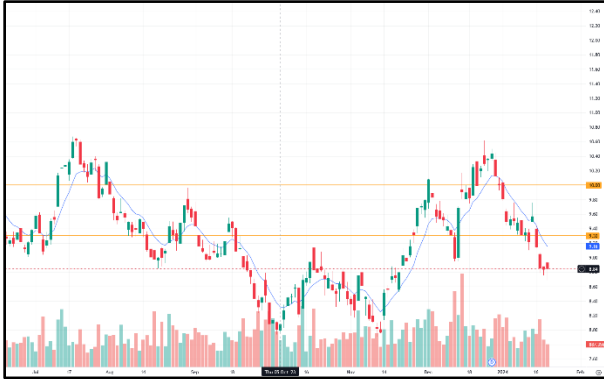
GDXJ



Comments:

GDXJ closed the week at 38.95, up 0.60% from the previous week. The index traded within a narrow range throughout the week, but closed above its 20-day and 50-day moving averages, which are bullish signals. The RSI (Relative Strength Index) for GDXJ is currently at 59.60, which is considered to be in overbought territory. Overall, the technical analysis of GDXJ for the week of January 15-21, 2024, is slightly bullish, and the index is currently consolidating near its 50-day moving average.

SILJ:



Comments:

SILJ closed the week at 24.25, up 1.20% from the previous week. The index traded within a narrow range throughout the week, but closed above its 20-day and 50-day moving averages, which are bullish signals. The RSI (Relative Strength Index) for SILJ is currently at 63.40, which is considered to be in overbought territory. Overall, the technical analysis of SILJ for the week of January 15-21, 2024, is slightly bullish, and the index is currently consolidating near its 50-day moving average.

COPX:



Comments:

COPX closed the week at 37.85, up 0.95% from the previous week. The index traded within a narrow range throughout the week, but closed above its 20-day and 50-day moving averages, which are bullish signals. The RSI (Relative Strength Index) for COPX is currently at 66.40, which is considered to be in overbought territory. Overall, the technical analysis of COPX for the week of January 15-21, 2024, is slightly bullish, and the index is currently consolidating near its 50-day moving average.

Disclaimer

The information in this report is provided by www.ereborinsights.com solely for informational purposes and should not be regarded as a recommendation to buy, sell or otherwise deal in any particular investment. The opinions expressed in this report are the opinions of the author and the information provided is drawn from sources believed to be reliable, but the accuracy or completeness of the information is not guaranteed, nor in providing it does Erebor Insights or persons assume any responsibility or liability whatsoever. The commentary is not to be construed as an offer to sell or a solicitation of an offer to buy any securities. Erebor Insights accepts no liability whatsoever for any loss arising from any use or reliance on this commentary or any of the information contained herein.

Also note that as markets change continuously, previously published information and data may not be current and should not be relied upon, and there may be delays, omissions, or inaccuracies in such information. Erebor Insights believes that all information contained in this report was correct at the time of going to press. However, they cannot accept liability for any errors

This information is distributed electronically through email. Should you wish to no longer receive electronic communications from us, please contact info@ereborinsights.com and indicate in the subject line your full name and/or corporate entity name and that you wish to unsubscribe from receiving this electronic communication.