

NEWSLETTER

Aclara
Resources
Announces
up to
US\$80M
Strategic
Investment

AUST: Top Winner
CRML: Top Loser



Palladium went up
this week by 6.31%



Weekly Market Overview

Commodity	Weekly Chg.	Weekly Chg. %	Vol.
Gold	👇	-1.04%	0.75%
Silver	👆	3.53%	2.37%
Copper	👆	5.67%	1.72%
Platinum	👆	2.79%	1.83%
Aluminium	👆	0.45%	0.64%
Palladium	👆	6.01%	1.04%
Nickel	👆	0.83%	1.68%
Lead	👇	-0.82%	1.46%
Tin	👆	3.37%	1.94%
Zinc	👆	0.90%	0.52%

Gold Junior Miners

Positive

- Gold Indices: **Positive**
- Commodity Sentiment: **Positive**
- Junior Miners Sentiment: **Positive**

Silver Junior Miners

Positive

- Silver Indices: **Positive**
- Commodity Sentiment: **Neutral**
- Junior Miners Sentiment: **Positive**

Copper Junior Miners

Positive

- Copper Indices: **Positive**
- Commodity Sentiment: **Neutral**
- Junior Miners Sentiment: **Positive**

Commodity Sentiment

Neutral

- Commodities Indices: **Neutral**
- Inflation: **Neutral**
- Consumer Sentiment: **Ext. Positive**

Junior Miners Sentiment

Positive

- Gold Indices: **Positive**
- Silver Indices: **Positive**
- Copper Indices: **Positive**
- Commodity Sentiment: **Positive**

Our barometer is a way to gauge market movements and whether security instruments are fairly priced. The theory is based on the logic that excessive negativity tends to drive down the prices, and too much positivity tends to have the opposite effect.

Our barometer is a compilation of different indicators that measure some aspect of ETF and commodities behavior. They are comprised of market momentum, price strength, and stock price breadth. It tracks how much these individual indicators deviate from their average. The weightage of each factor is subject to past behavior and market conditions.

Top 5 ↗		Top 5 ↘	
Ticker	1 W Chg. %	Ticker	1 W Chg. %
GORO	20.19%	XPL	-22.20%
SCCO	19.38%	AUMN	-21.25%
VGZ	16.98%	UAMY	-13.19%
TG	16.82%	ATLX	10.18%
CTGO	15.64%	USGO	-9.71%

Top 5 Weekly Private Placement News

- Aclara Resources Announces up to US\$80M Strategic Investment by Cap in Its Chilean Subsidiary and an Option for an Equity Investment of up to 19.9%: [Link](#)
- Rare Element Resources Announces Results of Oversubscribed Rights Offering of Common Shares: [Link](#)
- Montage Gold Closes C\$35 Million Private Placement: [Link](#)
- Integra Closes Upsized Bought Deal Offering With Full Exercise Of Over-Allotment Option Proceeds Of Approximately C\$15 Million: [Link](#)
- Abcourt Mines Announces Non-Brokered Private Placement for up to \$5.0 Million Resulting in the Creation of a Control Person: [Link](#)

30 Deals
>\$190M

[Find all the Private Placements and News HERE](#)

Top Junior Mining News

- Dust settles on Alcoa’s \$3.4 billion takeover: [Link](#)
- Lithium Americas Receives Conditional Commitment for \$2.26 Billion ATVM Loan from the U.S. DOE for Construction of Thacker Pass: [Link](#)
- Silvercorp Offer for OreCorp to Expire March 22, 2024: [Link](#)
- Athabasca Minerals Inc. Granted Stay Extension and Replacement Interim Financing: [Link](#)
- Lincoln Ventures Ltd. Announces Updates on Acquisition of Clear Hills Lithium Project and Preparation of 43-101 Report: [Link](#)

Opinions and Insights

- Gold Weekly Price Forecast: [Link](#)
- Silver Weekly Price Forecast: [Link](#)
- Commodity Weekly: [Link](#)

High Impact Calendar (GMT +1:00)

GMT +00:00		High Impact Expected News		
Date	Time	Announcement	Previous	Forecast
18/3/2024	4:00am	CH Industrial Production y/y	6.80%	5.30%
19/3/2024	Tentative	JN Monetary Policy Statement		
20/3/2024	8:00pm	US Federal Funds Rate	5.50%	5.50%
20/3/2024	8:00pm	US FOMC Economic Projections		
20/3/2024	8:00pm	US FOMC Statement		
20/3/2024	8:30pm	US FOMC Press Conference		
21/3/2024	2:30pm	US Philly Fed Manufacturing Index	5.2	-1.8
21/3/2024	2:30pm	US Unemployment Claims	209K	214K
21/3/2024	3:45pm	US Flash Manufacturing PMI	52.2	51.8
21/3/2024	3:45pm	US Flash Services PMI	52.3	52
22/3/2024	3:30pm	US Fed Chair Powell Speaks		

Erebor Technicals

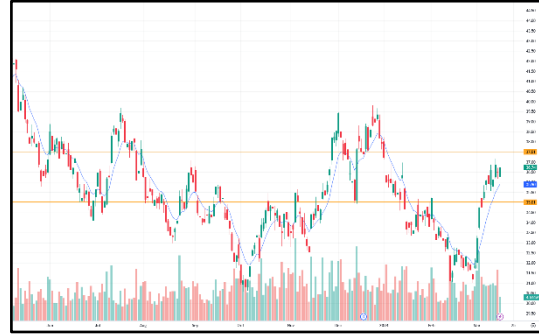
SPGSCI



Comments:

The S&P GSCI continued its upward movement observed in the previous weeks. The closing price on March 15th (618.25) was higher than the opening price on March 11th (612.40), reflecting a weekly increase of 0.98%. The RSI of 67.40 on March 15th indicates the S&P GSCI might be nearing overbought territory, suggesting a potential pullback could be imminent in the short term.

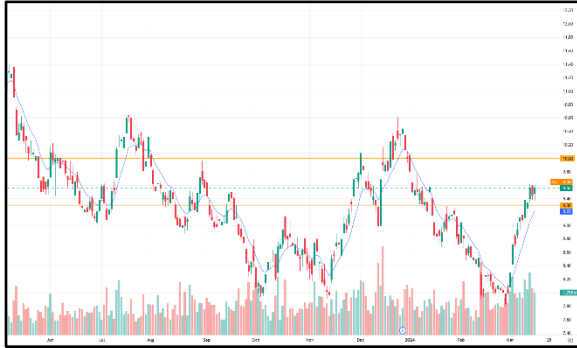
GDXJ



Comments:

The closing price of \$42.50 on March 15th reflects a moderate upward movement throughout the week, similar to the S&P GSCI. The 0.60% increase aligns with the positive sentiment observed in the broader market during that timeframe. The RSI of 65.70 on March 15th indicates GDXJ might be nearing overbought territory, suggesting a potential pullback could be imminent in the short term. However, it's important to consider other factors beyond the RSI when making investment decisions.

SILJ:



COPX:



Comments:

If SILJ followed a similar trajectory to the S&P GSCI and other major indices, it could have continued an upward movement observed in the previous weeks. The S&P GSCI closed the week of March 11-15 higher than the previous week, indicating a positive sentiment in the market. SILJ's Focus: Since SILJ is an ETF that tracks the Solactive Global Silver Miners' Index, its performance is often tied to the price movements of silver and silver mining companies. Positive sentiment in the broader market, coupled with potential increases in silver prices, could have propelled SILJ upwards during that week.

Comments:

The closing price of \$41.59 on March 15th indicates COPX ended the week higher than it began. This suggests an upward movement throughout the week, similar to the S&P GSCI and GDXJ. The 2.49% increase from the previous week's closing price further confirms a positive performance for COPX.

Disclaimer

The information in this report is provided by www.ereborinsights.com solely for informational purposes and should not be regarded as a recommendation to buy, sell or otherwise deal in any particular investment. The opinions expressed in this report are the opinions of the author and the information provided is drawn from sources believed to be reliable, but the accuracy or completeness of the information is not guaranteed, nor in providing it does Erebor Insights or persons assume any responsibility or liability whatsoever. The commentary is not to be construed as an offer to sell or a solicitation of an offer to buy any securities. Erebor Insights accepts no liability whatsoever for any loss arising from any use or reliance on this commentary or any of the information contained herein.

Also note that as markets change continuously, previously published information and data may not be current and should not be relied upon, and there may be delays, omissions, or inaccuracies in such information. Erebor Insights believes that all information contained in this report was correct at the time of going to press. However, they cannot accept liability for any errors

This information is distributed electronically through email. Should you wish to no longer receive electronic communications from us, please contact info@ereborinsights.com and indicate in the subject line your full name and/or corporate entity name and that you wish to unsubscribe from receiving this electronic communication.