

NEWSLETTER

Steppe Gold Signs Binding Term Sheet for \$150M to Fully Fund the Phase 2 Expansion at the ATO Gold Mine

RTLGF: Top Winner
URVNF: Top Loser



Silver went up this week by 8.15%



Silver Junior Miners

Neutral



- Silver Indices: **Neutral**
- Commodity Sentiment: **Neutral**
- Junior Miners Sentiment: **Neutral**

Weekly Market Overview

Commodity	Weekly Chg.	Weekly Chg. %	Vol.
Gold	↗	1.55%	0.67%
Silver	↗	8.15%	2.17%
Copper	↗	4.25%	1.11%
Platinum	↗	6.94%	1.56%
Aluminium	↗	5.81%	1.53%
Palladium	↗	1.56%	1.88%
Nickel	↗	4.58%	1.39%
Lead	↗	3.73%	0.85%
Tin	↗	0.47%	2.19%
Zinc	↗	3.22%	2.64%

Gold Junior Miners

Neutral

- Gold Indices: **Neutral**
- Commodity Sentiment: **Neutral**
- Junior Miners Sentiment: **Neutral**

Silver Junior Miners

Neutral

- Silver Indices: **Neutral**
- Commodity Sentiment: **Neutral**
- Junior Miners Sentiment: **Neutral**

Copper Junior Miners

Neutral

- Copper Indices: **Neutral**
- Commodity Sentiment: **Neutral**
- Junior Miners Sentiment: **Neutral**

Commodity Sentiment

Neutral

- Commodities Indices: **Neutral**
- Inflation: **Neutral**
- Consumer Sentiment: **Positive**

Junior Miners Sentiment

Neutral

- Gold Indices: **Neutral**
- Silver Indices: **Neutral**
- Copper Indices: **Neutral**
- Commodity Sentiment: **Neutral**

Our barometer is a way to gauge market movements and whether security instruments are fairly priced. The theory is based on the logic that excessive negativity tends to drive down the prices, and too much positivity tends to have the opposite effect.

Our barometer is a compilation of different indicators that measure some aspect of ETF and commodities behavior. They are comprised of market momentum, price strength, and stock price breadth. It tracks how much these individual indicators deviate from their average. The weightage of each factor is subject to past behavior and market conditions.

Top 5 ↗		Top 5 ↘	
Ticker	1 W Chg. %	Ticker	1 W Chg. %
RTLGF	292.16%	URVNF	-99.58%
SPODF	189.92%	GWSAF	-98.63%
NBRI	150.00%	NVAAF	-74.29%
MXTRF	150.00%	PLYN	-70.00%
GGLXF	106.33%	GHVND	-52.55%

Top 5 Weekly Private Placement News

- Steppe Gold Signs Binding Term Sheet for \$150M for Phase 2 Expansion: [Link](#)
- Lithium Ionic Announces C\$25M Bought Deal Financing: [Link](#)
- Marimaca Announces Closing of C\$20M Strategic Investment: [Link](#)
- ATEX Announces \$15M Credit Facility with Strategic Shareholders: [Link](#)
- Electra Announces Brokered P.P. for Gross Proceeds of up to \$10M: [Link](#)

26 Deals
>\$286.5M

[Find all the Private Placements and News HERE](#)

Top Junior Mining News

- Element79 Gold Announces Sale of Properties from Battle Mountain Portfolio in Nevada: [Link](#)
- Cascadia Announces Closing of Spin-Out Transaction with ATAC Resources Ltd: [Link](#)
- Nevada Lithium Completes Acquisition of 100% Ownership of Bonnie Claire Lithium Project: [Link](#)
- Lundin Mining Announces Closing of the Acquisition of Majority Interest in the Caserones Copper: [Link](#)
- Monarch Signs Agreement to Sell Croinor Property: [Link](#)

Opinions and Insights

- Gold Weekly Price Forecast: [Link](#)
- Silver Weekly Price Forecast: [Link](#)
- Commodity weekly: Weak dollar driven rally: [Link](#)
- Gold Scores Best Weekly Gain Since April, Silver Soar: [Link](#)
- Gold and Silver Analysis: Buy the Dips: [Link](#)
- High points for economic data scheduled for July 17 week: [Link](#)
- Schwab Market Perspective: Half Full?: [Link](#)
- Silver price hits two month high: is this the start of a bull run?: [Link](#)
- US Consumer Sentiment Jumps to Near Two-Year High on Job Market: [Link](#)
- The Fed's difficult decision at July's FOMC meeting: [Link](#)

**Trading on social media
and trading in real life**



High Impact Calendar (GMT +1:00)

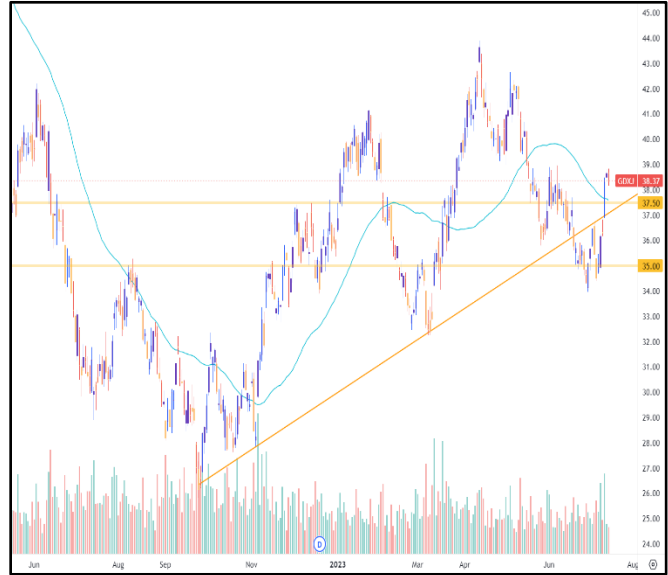
GMT +00:00		High Impact Expected News		
Date	Time	Announcement	Previous	Forecast
17-Jul	3:00 AM	CH GDP q/y	4.5%	7.1%
17-Jul	1:30 PM	CH Industrial Production y/y	3.5%	2.5%
17-Jul	1:30 PM	US Empire State Manufacturing Index	6.6%	-3.5%
18-Jul	1:30 PM	US Core Retail Sales m/m	0.1%	0.4%
18-Jul	1:30 PM	US Retail Sales m/m	0.3%	0.5%
20-Jul	1:30 PM	US Philly Fed Manufacturing Index	-13.7	-10.2
20-Jul	1:30 PM	US Unemployment Claims	237K	242K

Erebor Technicals

SPGSCI



GDXJ



Comments:

SPGSCI is following a descending channel since Jun 2022. This week the Index increased and closed at the price of 562.53.

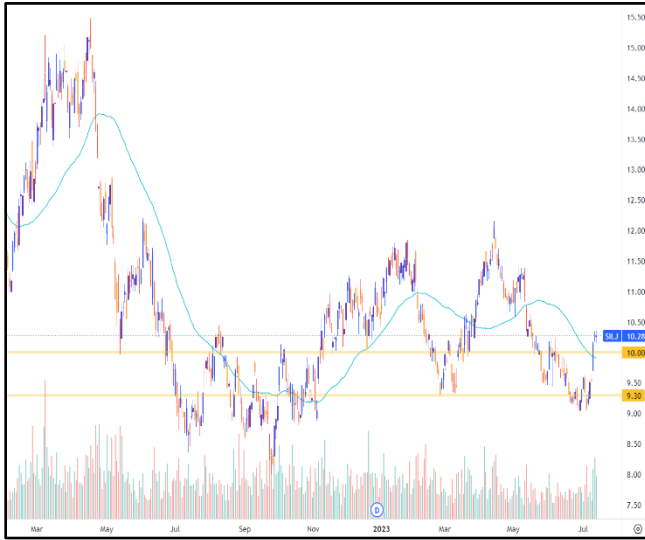
Commodities index is still moving in the channel, following a down trend. The price is moving close the crucial area of 555.00 and the upper edge of the channel where it seems finding some resistance.

Comments:

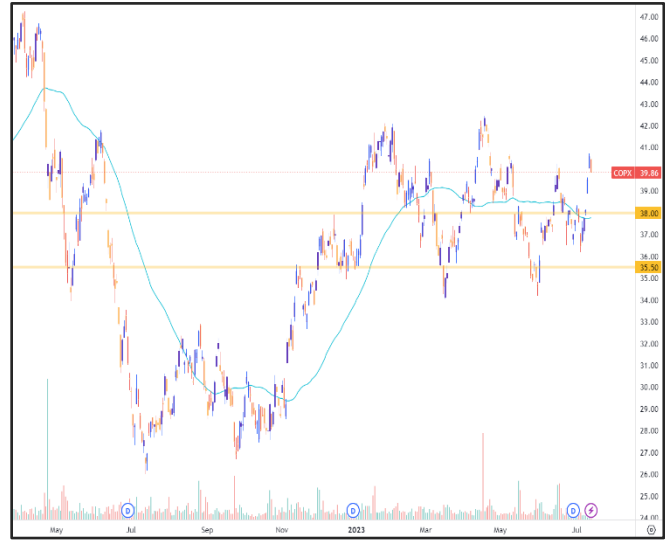
GDXJ moving in a bullish trend since September 2022. This week the ETF increased and closed at the price of 38.50.

Gold Junior Miners are trying to stay on an uptrend. This week the ETF price went all the way up, close to the crucial area of 37.50 and the 50 DMA, where these can be used now as support levels. GDXJ was positively affected from this week's news.

SILJ:



COPX:



Comments:

SILJ is trying to form a trend. This week the ETF increased and closed at the price of 10.28.

Silver Junior Miners price went all the way up, close to the crucial area around 10.00, and the 50 DMA, where these can be used now as support levels. SILJ was positively affected from this week's news with its price getting soared.

Comments:

COPX is moving in a bullish trend since November 2022. This week the ETF increased and closed at the price of 39.86.

Copper Miners are trying to stay on an uptrend. The ETF price gained a lot of ground, after finding great support from the crucial area of 38.00 and the 50 DMA. COPX was positively affected from this week's news.

Disclaimer

The information in this report is provided by www.ereborinsights.com solely for informational purposes and should not be regarded as a recommendation to buy, sell or otherwise deal in any particular investment. The opinions expressed in this report are the opinions of the author and the information provided is drawn from sources believed to be reliable, but the accuracy or completeness of the information is not guaranteed, nor in providing it does Erebor Insights or persons assume any responsibility or liability whatsoever. The commentary is not to be construed as an offer to sell or a solicitation of an offer to buy any securities. Erebor Insights accepts no liability whatsoever for any loss arising from any use or reliance on this commentary or any of the information contained herein.

Also note that as markets change continuously, previously published information and data may not be current and should not be relied upon, and there may be delays, omissions, or inaccuracies in such information. Erebor Insights believes that all information contained in this report was correct at the time of going to press. However, they cannot accept liability for any errors

This information is distributed electronically through email. Should you wish to no longer receive electronic communications from us, please contact info@ereborinsights.com and indicate in the subject line your full name and/or corporate entity name and that you wish to unsubscribe from receiving this electronic communication.