

# NEWSLETTER

AUMN: Top Winner  
LXFR: Top Loser

Endeavour  
Silver Closes  
US\$120M  
Project Loan  
Debt Facility to  
Advance the  
Development  
of Terronera



Zinc went down this  
week by 8.28%



### Weekly Market Overview

Commodity	Weekly Chg.	Weekly Chg. %	Vol.
Gold	↗	5.43%	1.70%
Silver	↗	5.25%	2.21%
Copper	↘	-0.14%	1.14%
Platinum	↘	-0.17%	1.35%
Aluminium	↘	-2.18%	0.29%
Palladium	↘	-0.99%	2.35%
Nickel	↗	0.36%	1.10%
Lead	↘	-6.34%	1.09%
Tin	↗	3.36%	0.82%
Zinc	↘	-8.28%	0.84%

#### Gold Junior Miners

**Neutral**

- Gold Indices: **Neutral**
- Commodity Sentiment: **Neutral**
- Junior Miners Sentiment: **Negative**

#### Silver Junior Miners

**Neutral**

- Silver Indices **Neutral**
- Commodity Sentiment: **Neutral**
- Junior Miners Sentiment: **Negative**

#### Copper Junior Miners

**Negative**

- Copper Indices: **Negative**
- Commodity Sentiment: **Neutral**
- Junior Miners Sentiment: **Negative**

#### Commodity Sentiment

**Neutral**

- Commodities Indices: **Neutral**
- Inflation: **Neutral**
- Consumer Sentiment: **Ext. Positive**

#### Junior Miners Sentiment

**Neutral**

- Gold Indices: **Neutral**
- Silver Indices: **Neutral**
- Copper Indices: **Negative**
- Commodity Sentiment **Neutral**

Our barometer is a way to gauge market movements and whether security instruments are fairly priced. The theory is based on the logic that excessive negativity tends to drive down the prices, and too much positivity tends to have the opposite effect.

Our barometer is a compilation of different indicators that measure some aspect of ETF and commodities behavior. They are comprised of market momentum, price strength, and stock price breadth. It tracks how much these individual indicators deviate from their average. The weightage of each factor is subject to past behavior and market conditions.

Top 5 ↗		Top 5 ↘	
Ticker	1 W Chg. %	Ticker	1 W Chg. %
AUMN	31.98%	LXFR	-27.03%
RETO	30.41%	WWR	-18.33%
MUX	21.27%	NXPL	-10.82%
CDE	11.61%	NEXA	-9.33%
HL	13.11%	CSTE	-8.86%

### Top 5 Weekly Private Placement News

- Endeavour Silver Closes US\$120M Project Loan Debt Facility: [Link](#)
- Denison Announces US\$55 Million Bought Deal Offering: [Link](#)
- Uranium Royalty Corp. Announces U.S.\$30M Bought Deal Financing: [Link](#)
- Dakota Gold Corp. Announces Strategic Partnership with Orion Mine Finance for \$17 Million: [Link](#)
- Sierra Metals Closes \$16.4 million Private Placement: [Link](#)

**15 Deals**  
**>\$291M**

[Find all the Private Placements and News HERE](#)

### Top Junior Mining News

- Newcrest Mining Announces Shareholders Vote in Favour of Scheme: [Link](#)
- Newmont Shareholders Vote Overwhelmingly to Approve Acquisition of Newcrest Mining: [Link](#)
- BHP Announces Non-Binding Indicative Proposal to Acquire OZ Minerals Limited: [Link](#)
- Newcrest Mining completes acquisition of Pretium Resources: [Link](#)

### Opinions and Insights

- Gold Weekly Price Forecast: [Link](#)
- Silver Weekly Price Forecast: [Link](#)
- Commodity Weekly: [Link](#)
- Gold sees best week since March with prices up 6% from last week's lows: [Link](#)
- Miners seek partners for copper assets as M&A heats up: [Link](#)

### High Impact Calendar (GMT +1:00)

GMT +00:00		High Impact Expected News		
Date	Time	Announcement	Previous	Forecast
10/16/2023	3:30pm	US Empire State Manufacturing Index	1.9	-6.4
10/17/2023	3:30pm	US Core Retail Sales m/m	0.60%	0.20%
10/17/2023	3:30pm	US Retail Sales m/m	0.60%	0.30%
10/18/2023	5:00am	CH Industrial Production y/y	4.50%	4.30%
10/19/2023	3:30pm	US Philly Fed Manufacturing Index	-13.5	-6.7
10/19/2023	3:30pm	US Unemployment Claims	209K	210K
10/19/2023	7:00pm	US Fed Chair Powell Speaks		

### Erebor Technicals

#### SPGSCI

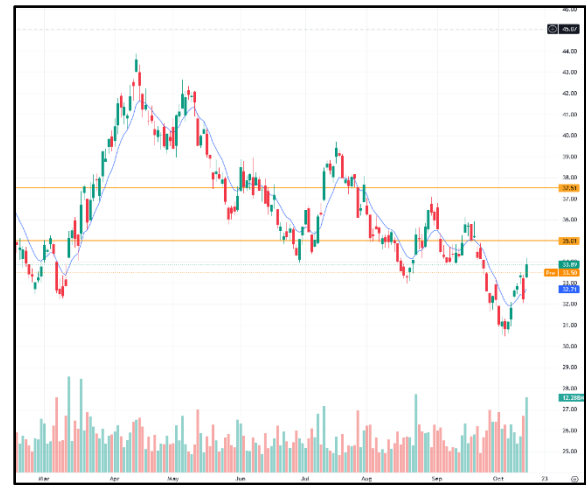


#### Comments:

The index traded within a relatively narrow range throughout the week, but closed above its 20-day and 50-day moving averages, which is a bullish signal.

The RSI (Relative Strength Index) for the S&P GSCI is currently at 55.40, which is considered to be neutral territory..

#### GDXJ



#### Comments:

The index traded within a relatively narrow range throughout the week, but closed above its 20-day and 50-day moving averages, which is a bullish signal.

The RSI (Relative Strength Index) for the GDXJ is currently at 53.40, which is considered to be neutral territory.

### SILJ:



#### Comments:

The index traded within a relatively narrow range throughout the week, but closed above its 20-day and 50-day moving averages, which is a bullish signal.

The RSI (Relative Strength Index) for the SILJ is currently at 54.40, which is considered to be neutral territory.

### COPX:



#### Comments:

The index traded within a relatively narrow range throughout the week, but closed above its 20-day and 50-day moving averages, which is a bullish signal.

The RSI (Relative Strength Index) for COPX is currently at 55.40, which is considered to be neutral territory.

### Disclaimer

The information in this report is provided by [www.ereborinsights.com](http://www.ereborinsights.com) solely for informational purposes and should not be regarded as a recommendation to buy, sell or otherwise deal in any particular investment. The opinions expressed in this report are the opinions of the author and the information provided is drawn from sources believed to be reliable, but the accuracy or completeness of the information is not guaranteed, nor in providing it does Erebor Insights or persons assume any responsibility or liability whatsoever. The commentary is not to be construed as an offer to sell or a solicitation of an offer to buy any securities. Erebor Insights accepts no liability whatsoever for any loss arising from any use or reliance on this commentary or any of the information contained herein.

Also note that as markets change continuously, previously published information and data may not be current and should not be relied upon, and there may be delays, omissions, or inaccuracies in such information. Erebor Insights believes that all information contained in this report was correct at the time of going to press. However, they cannot accept liability for any errors

This information is distributed electronically through email. Should you wish to no longer receive electronic communications from us, please contact

[info@ereborinsights.com](mailto:info@ereborinsights.com)