

7th Aug 2023

www.ereborinsights.com

NEWSLETTER

**NGEx
Minerals
Closes C\$85
Million
Private
Placement**

**RETO: Top Winner
TG: Top Loser**



**Tin went down this
week by -7.79%**




Weekly Market Overview

Commodity	Weekly Chg.	Weekly Chg. %	Vol.
Gold	↘	-1.49%	0.32%
Silver	↘	-4.02%	0.80%
Copper	↘	-0.02%	1.71%
Platinum	↘	-1.40%	2.02%
Aluminium	↘	-2.61%	1.00%
Palladium	↗	3.48%	3.00%
Nickel	↘	-4.68%	0.93%
Lead	↘	-0.42%	0.89%
Tin	↘	-7.79%	1.24%
Zinc	↘	-2.80%	2.20%

Gold Junior Miners


Neutral



- Gold Indices: **Neutral**
- Commodity Sentiment: **Neutral**
- Junior Miners Sentiment: **Neutral**

Silver Junior Miners


Neutral



- Silver Indices: **Neutral**
- Commodity Sentiment: **Neutral**
- Junior Miners Sentiment: **Neutral**

Copper Junior Miners


Neutral



- Copper Indices: **Neutral**
- Commodity Sentiment: **Neutral**
- Junior Miners Sentiment: **Neutral**

Commodity Sentiment


Neutral



- Commodities Indices: **Neutral**
- Inflation: **Neutral**
- Consumer Sentiment: **Neutral**

Junior Miners Sentiment

Neutral



- Gold Indices: **Neutral**
- Silver Indices: **Neutral**
- Copper Indices: **Neutral**
- Commodity Sentiment: **Neutral**

Our barometer is a way to gauge market movements and whether security instruments are fairly priced. The theory is based on the logic that excessive negativity tends to drive down the prices, and too much positivity tends to have the opposite effect.

Our barometer is a compilation of different indicators that measure some aspect of ETF and commodities behavior. They are comprised of market momentum, price strength, and stock price breadth. It tracks how much these individual indicators deviate from their average. The weightage of each factor is subject to past behavior and market conditions.

Top 5 ↗		Top 5 ↘	
Ticker	1 W Chg. %	Ticker	1 W Chg. %
RETO	14.74%	TG	-19.79%
UUUU	11.04%	AUMN	-16.52%
UAMY	9.65%	CENX	-10.88%
DC	7.33%	CSTE	-10.61%
XPL	4.96%	AAU	-10.27%

Top 5 Weekly Private Placement News

- NGEx Minerals Closes C\$85 Million Private Placement: [Link](#)
- Denarius Metals Announces Proposed Private Placement: [Link](#)
- Fireweed Announces \$16.8 Million Financing with Key Shareholders: [Link](#)
- Tectonic Metals Closes Second Tranche; \$7.67 Million: [Link](#)
- South Star Battery Metals Announces Closing of Final Subscription from its Previously Announced Oversubscribed Non-Brokered Private Placement: [Link](#)

13 Deals
>\$109M

[Find all the Private Placements and News HERE](#)

Top Junior Mining News

- Lincoln Gold and Eros Resources Announce Signing of a Non-Binding LOI: [Link](#)
- Mincor nickel quality issues resolved under Wyloo ownership: [Link](#)
- EQR Acquires Leading European Tungsten Producer, Saloro S.L.U., And Secures \$25 Million Investment By Oaktree: [Link](#)
- Silvercorp Metals Inc.: Expiry Of Exclusivity Period: [Link](#)
- Precipitate Gold Terminates Option to Acquire Motherlode Project, Newfoundland: [Link](#)

Opinions and Insights

- Gold Weekly Price Forecast: [Link](#)
- Silver Weekly Price Forecast: [Link](#)
- Shenzhen Point Gold Refining Co. Ltd added to LBMA's Gold Good Delivery List: [Link](#)
- CME Group Micro Gold, Silver, and Copper Products Update – August 2023: [Link](#)
- LMEsmart Re-Booking Process: [Link](#)
- Producer Price Index - July 2023: [Link](#)
- Massive 1,080-Carat Diamond, One of the World's Largest, Was Just Uncovered in Botswana: [Link](#)
- Copper Miner Freeport Hit by Cyberattack; Impact on Production Is Limited: [Link](#)

High Impact Calendar (GMT +1:00)

GMT +00:00		High Impact Expected News		
Date	Time	Announcement	Previous	Forecast
15- Aug	5:00 AM	CH Industrial Production y/y	4.40%	4.30%
15- Aug	3:30 PM	US Core Retail Sales m/m	0.20%	0.40%
15- Aug	3:30 PM	US Empire State Manufacturing Index	1.1	-0.3
15- Aug	3:30 PM	US Retail Sales m/m	0.20%	0.40%
16- Aug	9:00 PM	US FOMC Meeting Minutes		
17- Aug	3:30 PM	US Philly Fed Manufacturing Index	-13.5	-9.8
17- Aug	3:30 PM	US Unemployment Claims	248K	240K
15- Aug	5:00 AM	CH Industrial Production y/y	4.40%	4.30%

Erebor Technicals

SPGSCI

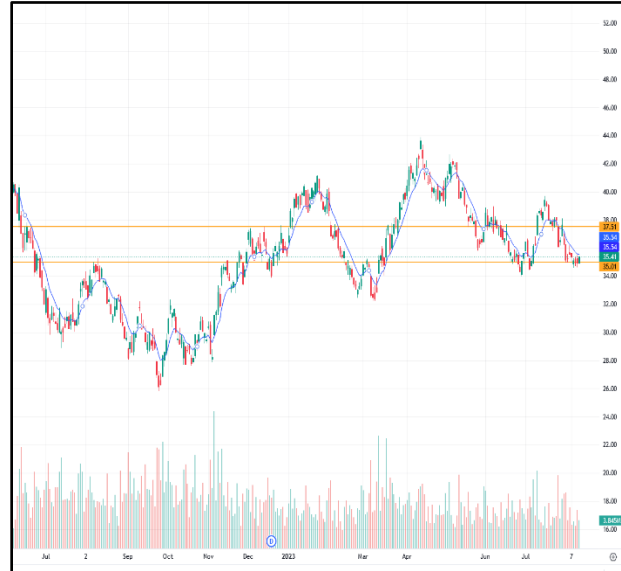


Comments:

SPGSCI is following a descending channel since Jun 2022. This week the Index increased and closed at the price of 551.85.

Commodities index is still moving in the channel, following a down trend. The price keeps moving close the crucial area of 555.00 and the 50 DMA where it seems finding some resistance.

GDXJ

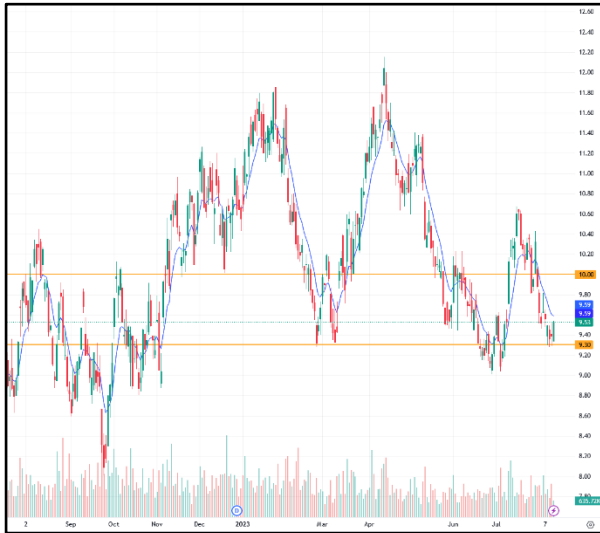


Comments:

GDXJ moving in a bullish trend since September 2022. This week the ETF slightly decreased and closed at the price of 35.06.

Gold Junior Miners are trying to stay on an uptrend. This week the ETF price was moving close to the crucial area of 35.00, where it seems it found support. Patience is needed to see how the price will move in the next few weeks.

SILJ:



COPX:



Comments:

SILJ is trying to form a trend. This week the ETF slightly decreased and closed at the price of 9.24.

Silver Junior Miners price is still moving close to the crucial area around 9.30 where it seems it's trying to find support. ETF has created a lower low this week. Patience is needed to see how the price will move in the next few weeks.

Comments:

COPX is moving in a bullish trend since November 2022. This week the ETF slightly decreased and closed at the price of 37.30.

Copper Miners are trying to stay on an uptrend. The ETF price is still moving close to the crucial area of 38.00 and the 50 DMA. Patience is needed to see how the price will move in the next few weeks.

Disclaimer

The information in this report is provided by www.ereborinsights.com solely for informational purposes and should not be regarded as a recommendation to buy, sell or otherwise deal in any particular investment. The opinions expressed in this report are the opinions of the author and the information provided is drawn from sources believed to be reliable, but the accuracy or completeness of the information is not guaranteed, nor in providing it does Erebor Insights or persons assume any responsibility or liability whatsoever. The commentary is not to be construed as an offer to sell or a solicitation of an offer to buy any securities. Erebor Insights accepts no liability whatsoever for any loss arising from any use or reliance on this commentary or any of the information contained herein.

Also note that as markets change continuously, previously published information and data may not be current and should not be relied upon, and there may be delays, omissions, or inaccuracies in such information. Erebor Insights believes that all information contained in this report was correct at the time of going to press. However, they cannot accept liability for any errors

This information is distributed electronically through email. Should you wish to no longer receive electronic communications from us, please contact info@ereborinsights.com and indicate in the subject line your full name and/or corporate entity name and that you wish to unsubscribe from receiving this electronic communication